



Office Solutions

Smart answers everywhere you turn.

www.360-os.com

800.227.5133

Coffee Program

At 360 Office Solutions we are excited to tell you about our new coffee programs. We are sure to have one that will fit your company's needs. From single serve, to pour-over, to brewers that serve large groups – We are here to provide a solution.

Break-Coffee



Away Edition



DID YOU KNOW ?

Coffee is the most popular drink worldwide, with over 400 billion cups consumed each year!

Choose the Keurig brewer that fits your office needs.

Keurig® is not just about great coffee. It's about the way great coffee is made. Keurig® has redefined brewing by combining state-of-the-art brewer technology with its unique and patented K-Cup® pack.



B130



B145

B130 - Designed for the hospitality industry, the B130 is the ideal choice for hotel-in-room brewing or a personal brewer in your office. Pour over.

B145 - A mainstay of small offices, up to 15 employees. Pour-Over, brews 6, 8 and 10 oz.

B150 - This brewer has all the features to serve small to medium-sized offices, up to 30 employees. Plumbed or Pour-Over, brews 4, 6, 8, 10 and 12 oz.

B3000SE - Designed for larger offices, the full-featured B3000SE is ideal for breakrooms, employee cafeterias and client coffee service. Serves 30 or more employees. Plumbed, brews 4, 6, 8 and 10 oz.



B150



B3000SE

Billings Office
Bozeman Office
Helena Office

1331 First Ave. N.
212 Zoot Way
802 Front Street

Ph. 406.248.7881
Ph. 406.585.1730
Ph. 406.449.3012

Fax 406.245.0621
Fax 406.522.3815
Fax 406.442.5022



How Our Keurig® Coffee Program Works:

- We offer the option of either purchasing a brewer, or leasing one via our coffee program. We only ask that you purchase your k-cups® from us. It's that simple!
- Should your leased brewer require any repairs while in your possession, we will gladly pick it up and make the necessary repairs or replace it with a working machine for free.
- With over 70 different k-cups® available, you'll never become "bored!"
- Still not convinced? Give us a call for a free demo. We'll then allow you to keep the brewer for up to 3 days to determine if it is the perfect fit for you and your business!



For a FREE 3-day trial...
call Snooks at 406.869.0421

Introducing our newest K-Cups® from Starbucks®



Each box contains 16 k-cups®

House Blend



A medium-roasted blend of coffees with balanced flavors and a hint of nut and cocoa.

Tasting Notes: Lively & Balanced
GMT-951616 **\$12.99/bx**

French Roast



Our darkest roast. Light-bodied and intensely smoky, for a bold start to your day.

Tasting Notes: Intense & Smoky
GMT-951716 **\$12.99/bx**

Breakfast Blend



A medium-roasted blend of coffees with bright citrus notes.

Tasting Notes: Crisp & Tangy
GMT-951316 **\$12.99/bx**

Sumatra



A dark-roasted, full-bodied coffee with spicy and herbal notes and a deep, earthy aroma.

Tasting Notes: Earthy & Herbal
GMT-951116 **\$12.99/bx**

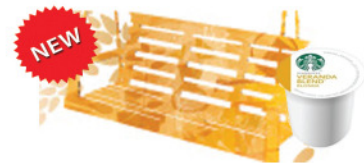
Pike Place® Roast



A medium-roasted coffee with rich flavor, good balance and a smooth finish.

Tasting Notes: Smooth & Balanced
GMT-951216 **\$12.99/bx**

Veranda Blend™



This coffee is mellow and approachable, with nuances of soft cocoa and lightly toasted nuts, light body and medium acidity.

Tasting Notes: Mellow & Soft
GMT-951416 **\$12.99/bx**

Iced Mocha Caramel Latte

- 1) Swirl chocolate and caramel syrups inside the walls and bottom of a clear 16 oz. cup.
- 2) Add a packet of sugar / sweetener. (optional)
- 3) Pack cup with ice.
- 4) Add about 1 oz. of Half & Half.
- 5) Brew 6 - 8 oz. of your favorite K-Cup® to half fill the cup.
- 6) Stir to mix the syrups and Half & Half into the coffee.
- 7) Add whipped cream and drizzle with chocolate and caramel syrups and top with sprinkles.






Not sure what flavor to choose? Here are some suggestions from our employees!



Brenda Sommerville
Furniture Project
Manager

Suggestion: Lake & Lodge GMT-6523



\$12.99/bx

Why she loves it: "It is a dark, rich roast, with a bit of a smoky aroma, but it has a smooth after-taste. A personal favorite of others at work... This is why we always keep this coffee well-stocked!" (24 k-cups® per box.)

DID YOU KNOW ?

Our sense of smell, more than any of our other senses, makes our final judgement on coffee.

Suggestion: Island Coconut GMT-6720



\$12.99/bx

Why she loves it: "This tropical treat has the sweet taste of coconut. Add some hazelnut creamer... Mmmm... A perfect union! But don't wait long - It is only available during the summer - then it's back to reality." (24 k-cups® per box.)



Theresa Barthuly
Furniture Specialist

Suggestion: Barista Prima - Italian Roast GMT-6614



\$16.99/bx

Why she loves it: "If you want 'real coffee,' try this dark robust heavy-bodied roast. It is a great way to start the day! You won't be disappointed." (24 k-cups® per box.)



Snooks Vance
Customer Service,
Keurig Specialist

Suggestion: Caramel Vanilla Cream GMT-6700



\$12.99/bx

Why he loves it: "It is awesome with cream and sugar! The taste of buttery caramel, and brown sugar and vanilla swirls. It's like having ice cream in a cup!" (24 k-cups® per box.)



Chris Polesky
Repair Coordinator

Suggestion: Newman's Own Organic Special Blend Extra Bold GMT-4050



\$12.99/bx

Why she loves it: "It is a cup of coffee that offers a rich, and robust, strong flavor, without the bitterness. From the first sip to the last... Now that's a perfect sup of coffee!" (24 k-cups® per box.)



Annette Patterson
Customer Service,
Contract Administrator

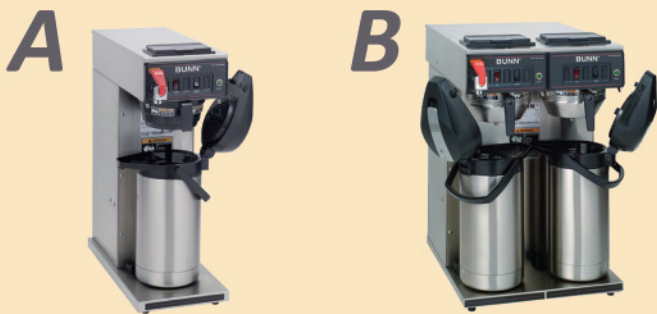
DID YOU KNOW ?

Flavored coffees are created after the roasting process, by applying flavored oils specially created for use on coffee beans.

Choose. Brew. Enjoy.®



Another exciting new brewer option is our commercial line of BUNN® coffee brewers. With this program, there is no need to invest any money in a brewer. We will provide it free under our lease program! All we ask is that you buy your coffee from us. We have a wide variety to choose from. Should your leased brewer require any repairs while in your possession, we will gladly pick it up and make the necessary repairs or replace it with a working machine for free. Still can't find the right brewer for your company? Give us a call! We have a full catalog of BUNN® brewers for you to choose from.



A. BUNN® Airpot Brewer (CWTFAPS)

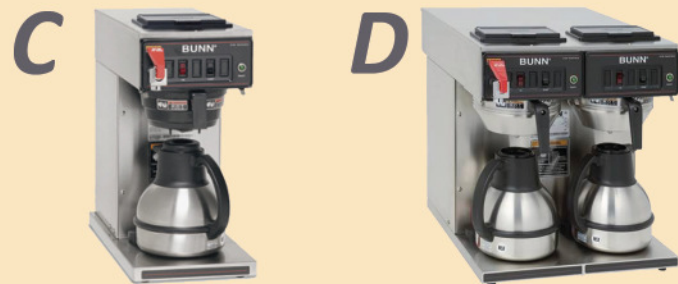
Low profile brewers with simple switch controls and flexible server options. Brews directly into 1.9 to 3 liter airpots. Hot water faucet with pourover feature.

BUN-230010006

B. BUNN® Automatic Dual Airpot Brewer (CWTFTWINAPS)

Low profile brewers with simple switch controls and flexible server options. Brews directly into 1.9 to 3 liter airpots. Hot water faucet with pourover feature.

BUN-234000041



C. BUNN® Thermal Carafe Brewer (CWTF15TC)

Accepts thermal carafe up to 8.5" tall. Use in quick-turn environment where high quality coffee is continuously refreshed. Hot water faucet with pour-over feature.

BUN-129500360

D. BUNN® Dual Thermal Carafe Brewer (CWTFTWMTC)

Brews 15 gallons (56.8 liters) of perfect coffee per hour. All stainless steel construction. Dual Brewer.

BUN-23400047



E. BUNN® Pourover Airpot Brewer (CW15APS)

Brews directly into 1.9 to 2.5 liter airpots. Easily transported to remote meeting rooms, etc. Does not require plumbing.

BUN-230010000

F. BUNN® 2.5 Liter Lever-Action Airpot

Stainless steel lining.

BUN-321250000

G. BUNN® 3.0 Liter Lever-Action Airpot

Stainless steel lining.

BUN-321300000



H. BUNN® Economical Thermal Carafe

The 1.9 liter or 64 oz. economy thermal carafe features a black, brew-through lid that allows you to brew directly into the carafe from any BUNN® thermal carafe brewer.

BUN-401630000

I. BUNN® Deluxe Thermal Carafe

This 1.9 liter or 64 oz. deluxe thermal carafe features a black, brew-through lid that allows you to brew directly into the carafe from any BUNN® thermal carafe brewer. An innovative vacuum insulating system allows the it to retain heat up to two times longer than the economy thermal carafe.

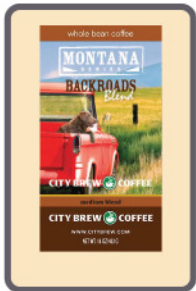
BUN-360290001



City Brew® Coffee

CITY BREW

If gourmet coffee is your cup of joe, then look no further... City Brew® coffee is a must try! Partnering up with City Brew® was a “no-brainer.” Our beliefs and goals are the same... a quality product with great service, and to be the best at what we do! City Brew® uses only the finest beans, and they roast over 30,000 pounds of coffee each month. So while we are delivering your paper, toner, and other supplies, let us drop off some fresh roasted coffee as well!



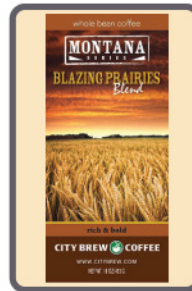
A. Backroads Blend

Sweet and juicy with hints of floral acidity, this distinctive blend will transport you to a state of utter relaxation. You'll taste rich caramel tones in every sip, finished with a hint of brown sugar to balance a smooth chocolate finish. So grab a cup, kick back and let it all go.

CBC-879018002852

Ground, 12 oz.

\$8.99/bg



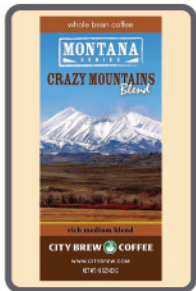
D. Blazing Prairies Blend

The darkest Montana Series on the shelf, this coffee will please the taste buds with flavors of toasted hazelnut and dark chocolate.

CBC-879018002289

Ground, 12 oz.

\$8.99/bg



B. Crazy Mountain Blend

Our newest in our Montana Series, Crazy Mountain Blend is a very smooth and well balanced medium roast coffee, with hints of fruit and citrus, with a mild nutty finish.

CBC-879018002333

Ground, 12 oz.

\$8.99/bg



E. City Brew® Coffee Packs 42 per pack.

Northern Lights (House Blend): A traditional twist on an old world coffee. Bold, wine-like, and slightly fruity with deep undertones of chocolate. The perfect combination for this Mocha Java style blend.

Zimzilla (Morning Blend): Bright and lively East African paired with a smooth nutty South American coffee, provides a pleasant acidity and a clean finish. A true cross-Atlantic romance.

French Roast: Rich, bold, and hearty blend. Enjoy sip-by-sip as if you were on the streets of Paris. Experience this classic European Dark Roast with an undeniable velvety finish.

Columbian Decaf: Well balanced smooth and enjoyable. Full of flavor, this Swiss WaterProcess® coffee is the perfect cup for those looking for a decaf experience.

C. Rolling Rivers Blend

It's an adventure for your senses when you pour a cup of Rolling Rivers Blend. Rich and balanced, its aroma is permeated with hints of sweet smoked cedar and dried fruit. Don't let this one get away.

CBC-879018002869

Ground, 12 oz.

\$8.99/bg

If you have a need for 1 lb., 2.5 lb., or 5 lb. coffee, give us a call, and we'll be happy to help you out!

DID YOU KNOW ?

Over 25 million people are employed in the coffee industry.

CBC-879018001596	Northern Lights	2.5 oz.	\$55.00/cs
CBC-879018002463	Northern Lights	3 oz.	\$62.00/cs
CBC-879018001763	Zimzilla	2.5 oz.	\$55.00/cs
CBC-879018002050	Zimzilla	3 oz.	\$62.00/cs
CBC-879018001565	French Roast	2.5 oz.	\$55.00/cs
CBC-879018002203	French Roast	3 oz.	\$62.00/cs
CBC-879018001855	Columbian Decaf.	2.5 oz.	\$55.00/cs
CBC-879018002074	Columbian Decaf.	3 oz.	\$62.00/cs

Coffee

DID YOU KNOW ?

Hawaii is the only state in the United States in which coffee is commercially grown.



Starbucks® Coffee 2.5 oz. 10-12 cups per pack. 18/bx.
House Blend: Starbucks® timeless signature blend. Easy to drink, with a light to medium body and a faint hint of toasted nut flavor.

SBK-11018190 **\$37.69/bx**

Decaf House Blend: Starbucks® timeless signature blend, carefully decaffeinated to retain the medium body and flavor of the caffeinated version.

SBK-11018191 **\$39.29/bx**

Breakfast Blend: Light-bodied and mild, with a hint of sparkling flavor.

SBK-11018193 **\$37.69/bx**

French Roast: Starbucks® darkest roasted coffee is both blunt and smoky. Blended with dense Latin American beans that can withstand the heat and length of the roast cycle. It's not the variety of coffee you taste, but the roast.

SBK-11018195 **\$37.69/bx**

Caffè Verona®: A versatile blend of Latin American and Asia Pacific coffees with the richness of Italian Roast. A touch of dark roast adds depth and sweetness.

SBK-11018192 **\$37.69/bx**



Seattle's Best® Coffee

Brew the perfect pot of coffee with these convenient packs. Finest Arabica beans deliver full-bodied, deeply aromatic flavor. Low acidity provides smooth taste. 2 oz. Each pack makes eight 8 oz. cups. 18 per case.



SBK-11008556	Seattle's Best LVD - Level 2	\$28.79/cs
SBK-11008554	Seattle's Best DLC Decaf. - Level 3	\$28.79/cs
SBK-11008560	Seattle's Best LVD - Level 4	\$28.79/cs
SBK-11008558	Seattle's Best LVC - Level 3	\$28.79/cs



Maxwell House® Premeasured Coffee

10-12 cups per pack. 42 packs per case; filters only where indicated.



GEN-86635	Light, Master Blend, 1.1 oz.	\$28.99/cs
GEN-866150	Medium, 1.5 oz.	\$41.99/cs
GEN-862400	Special Delivery, Filter Pack, 1.2 oz.	\$37.79/cs

DID YOU KNOW ?

57% of coffee is consumed during breakfast; 34% between meals, and 13% during other meals.

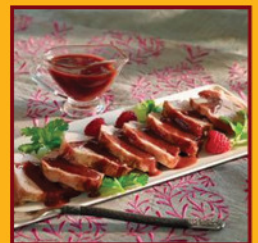
Grilled Pork Tenderloins with Five-Spice Raspberry Sauce

Ingredients:

- No-Stick Cooking Spray
- 1 1/4 lb. of boneless pork tenderloins
- Salt and pepper

For Sauce:

- 1/4 tsp. Instant Coffee Crystals
- 1/2 tsp. rice wine vinegar
- 1/2 tsp. minced ginger
- 1/2 tsp. minced garlic
- 3 tbs. Seedless Red Raspberry Jam
- 2 tbs. heavy cream
- 1 tsp. oyster sauce
- 1/8 tsp. five-spice powder
- 1 tbs. finely chopped fresh cilantro



1.) Spray cool grill grates with no-stick cooking spray. Heat grill to medium (325°F to 350°F). Generously season tenderloins with salt and pepper. Grill 20 to 25 minutes or until thermometer reads 160°F. Transfer tenderloins to platter. Tent with foil. Allow meat to rest for 5 minutes before slicing.

2.) Dissolve coffee crystals in vinegar. Spray small skillet with no-stick spray. Sauté ginger and garlic over medium heat until aromatic, about 1 minute. Whisk in the raspberry jam, heavy cream, oyster sauce, five-spice powder, and vinegar-coffee mixture, cooking until the sauce thickens. Serve sauce over sliced tenderloin garnished with chopped cilantro.



A. Bigelow® Flavored Tea

Individually wrapped in stay-fresh foil packets. Sold by the box.

RCB-003401	Raspberry Royale®	28 bags/box	\$4.69/bx
RCB-003411	Constant Comment®	28 bags/box	\$4.69/bx
RCB-003421	Lemon Lift®	28 bags/box	\$4.69/bx
RCB-003431	Cinnamon Stick®	28 bags/box	\$4.69/bx
RCB-003451	English Teatime®	28 bags/box	\$4.69/bx
RCB-003481	Earl Grey	28 bags/box	\$4.69/bx
BTC-00349	Darjeeling Blend	28 bags/box	\$4.69/bx
RCB-00388	Green Tea	28 bags/box	\$4.69/bx
RCB-003991*	I Love Lemon®	28 bags/box	\$4.69/bx
BTC-00401*	Cozy Chamomile®	28 bags/box	\$4.69/bx
BTC-00356*	Decaf. Black	48 bags/box	\$5.29/bx
BTC-15577	Assorted Teas	168 bags/box	\$24.89/bx
BTC-16578*	Assorted Decaf. Teas	168 bags/box	\$24.89/bx

*Indicates decaf. teas



B. Bigelow® Green Teas

Eight individually wrapped packets of each flavor. Flavors include: Green Tea, Green Tea Decaf., Constant Comment® Green Tea, Green Tea with Mint, Green Tea with Lemon, Green Tea with Peach, Green Tea with Mango, and Earl Grey Green Tea. 64 bags/box.

BTC-30568 \$12.39/bx



C. Starbucks® TAZO® Tea and Gourmet Hot Cocoa

TAZO® Tea: Three bags of each of the following eight flavors - Awake™, Calm™, China Green Tips, Earl Grey, Passion™, Refresh™, Chai, and Zen™.

Hot Cocoa: Indulge yourself year-round with this rich and creamy hot beverage. Made from the highest quality Dutch cocoa.

TZO-153966	Assorted TAZO® Teas	24 bags/box	\$4.99/bx
SBK-197861	Gourmet Hot Cocoa	24 packs/box	\$17.99/bx

D. Swiss Miss® Hot Cocoa

Premeasured packets deliver a rich chocolate flavor.



HUN-55280	Milk Chocolate	50 packs/box	\$7.99/bx
HUN-55584	No Sugar Added	24 packs/box	\$5.99/bx



E. Lipton® Apple Cider

Just add hot water and serve!
14 packs/box.

TJL-00765 \$5.79/bx

Constant Comment® Muffins

Ingredients:

- 1 1/4 cups milk
- 4 Constant Comment® Tea Bags (variation: Cinnamon Stick®)
- 2 1/2 cups all-purpose flour
- 1/3 cup sugar
- 1 1/2 tbs. baking powder
- 3/4 cup butter, cold (1 1/2 sticks)



Instructions: Preheat oven to 400° F. Grease muffin cups or use liners. Combine milk and tea bags in a small saucepan. Heat over medium/low heat until bubbles form around the edge, stirring occasionally. (DO NOT BOIL.) Remove from heat and let cool (15-20 minutes); remove tea bags, squeezing out liquid. Set aside. In large bowl, combine dry ingredients. Cut in butter with a pastry blender until mixture resembles coarse crumbs. Stir in the tea-infused milk just until flour is moistened. Do not over mix. Spoon mixture into muffin cups. Bake 20 minutes or until golden brown. Remove from pan and cool on a wire rack. If desired, serve with a clotted cream and jam

Everything Else...

DID YOU KNOW ?

37% of coffee drinkers drink their coffee black; while 63% add a sweetener such as sugar or cream.



A. Office Snax® Sugar

Available in a resealable 20 oz. canister or 1,200 convenient packets.

OFS-00019	Canister	\$2.29/ea
OFS-00021	Packets	\$15.99/ct

B. Sugar in the Raw®

A natural, unrefined sugar made from sugar cane grown in Maui. Each packet holds approximately one teaspoon and has five grams of carbohydrates and 20 calories. 200/box.

OFS-00319 \$11.99/bx



C. Splenda® No Calorie Sweetener

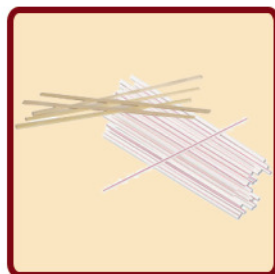
A great way to sweeten hot and cold beverages, fresh fruit and more. Each packet sweetens like two teaspoons of sugar and has no calories or carbohydrates per serving.

JOJ-200022	100/box	\$5.49/bx
JOJ-200411	400/box	\$15.79/bx
JOJ-200094	700/box	\$18.99/bx

D. Stir Sticks

Sold by the box.

RPP-R810	Wood, 8 lbs.	\$2.99/bx
OFX-STR5	Plastic, 1,000/bx	\$2.89/bx



E. Coffee Filters

Fit most commercial brewers. White. 1,000/carton.

BNN-A10	10 Cup	\$8.99/ct
BNN-1000	12 Cup	\$10.29/ct



F. Office Snax® Creamer

Sold by the 12 oz. canister.

OFX-00020CT	24/carton	\$50.99/ct
OFX-00020	1/each	\$2.39/ea



G. Coffee-Mate® Nondairy Creamer

Rich and creamy, non-dairy powdered creamer for your morning cup of coffee. 0 grams trans fat, cholesterol-free, gluten-free, Kosher dairy and shelf-stable.

NES-30032	Original, 50 packets	\$2.89/bx
NES-55882	Original, 11 oz. canister	\$3.19/ea
NES-74185	Original Lite, 11 oz. canister	\$3.19/ea
NES-35775	French Vanilla, 15 oz. canister	\$3.99/ea
NES-12345	Hazelnut, 15 oz. canister	\$3.99/ea

H. Coffee-Mate® Liquid Creamer

No refrigeration needed. 50 cups/box.

NES-35110*	Original	\$3.79/bx
NES-35170*	French Vanilla	\$5.29/bx
NES-35180	Hazelnut	\$5.29/bx

*Nondairy



H. Dixie® PerfectTouch® Hot Cups

360-5342CDPK	12 oz., 50/pk	\$5.99/pk
DIX-5338DX	8 oz., 500/pk	\$44.89/ct
DIX-5310DX	10 oz., 500/pk	\$52.99/ct
DIX-5342CD	12 oz., 500/pk	\$58.29/ct
DIX-5356DX	16 oz., 500/pk	\$57.99/ct
360-D9542PK	Lids 10-16 oz., 100/pk	\$4.19/pk
DIX-D9542	Lids 10-16 oz., 500/ct	\$36.99/ct



Office Solutions

Smart answers everywhere you turn.

Buy Local 360°