

Allsteel®

# WORKPLACE SOLUTIONS





Workplace Solutions



# Workplace Solutions

**4-7**

CHANGING WORKPLACE

**8-21**

SOLO

**22-35**

TEAM

**36-49**

COMMUNITY

**50-62**

PRODUCT INDEX



# The Workplace is Changing

Workplaces are responding to major shifts happening in business, technology, demographics, and other far-reaching forces. Factor in the ever-increasing pace of those changes, and the workplace must also be more adaptable over time, even in ways we cannot yet imagine.

That may sound like a tall order, but Allsteel believes there are ways to make sense of all the noise, and develop comprehensive

workplace strategies that successfully address all the things an organization must consider.

We would like to help. This collection of ideas and thought-starters is a visual representation of the importance of supporting the work of individuals, teams, and the organization as a whole through a variety of space typologies we refer to as solo, team, and community.

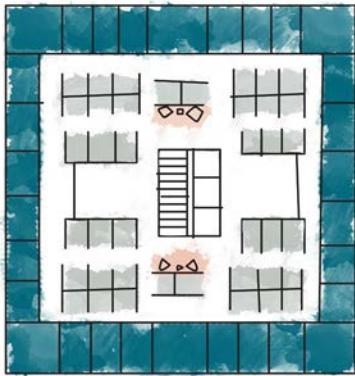


*Helping you, your business, and your people become  
what you believe they are meant to be.*



Instead of only seeing space as a cost center, allocated based on status, and assuming that work is done alone, space can now be one of the resources that supports the full range of activities individuals and teams do to achieve business goals and build community. Organizations have added a whole host of new kinds of spaces to work as teams, socialize, and find quiet to concentrate.

Thoughtful modularity and spatial furniture 'kits-of-parts' enable more frequent and less-costly reconfiguration as business, technology, or work processes change.



## Enclosed Perimeter Planning

*Primary driver is to provide enclosed offices which support either a hierarchy or a workforce whose primary function requires privacy.*



Solo spaces are large and may occupy up to 80% of the floorplan; they act as a symbol of the position the occupant has gained within the organization.



Team spaces have limited configurations and are typically less flexible and enclosed.



Client-facing spaces are generally larger and more formal.



## Efficiency Planning

*Primary driver is to design a space which optimally utilizes the square footage and the furniture solution which allows the organization to efficiently change as priorities shift.*



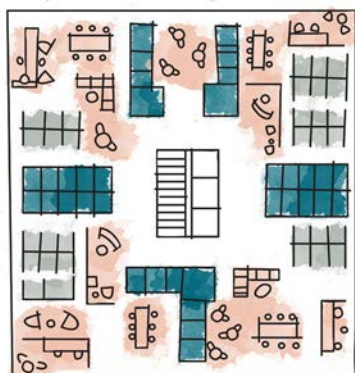
Digitization reduces storage requirements, and lower frequency of use provides a rationale for smaller solo spaces.



An expanded variety of sizes and configurations supports a full range of meeting types, postures, and durations.



The café may now be an active destination used throughout the day for solo or team work as well as socialization.



## Activity-Based Planning

*Primary driver is to provide workstations and other spaces designed around the activities performed by the individual and group with little to no limitation on the amount of variety of furniture solutions.*



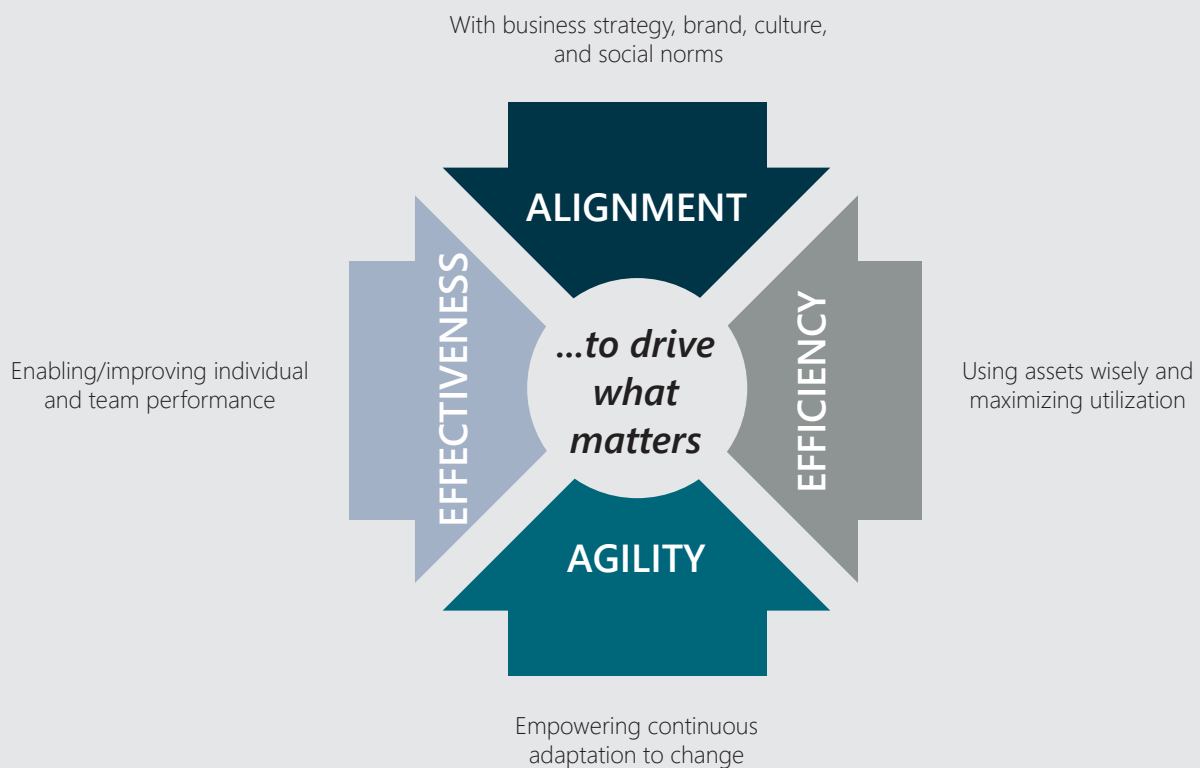
Solo work: from intense concentration to thoughtful reflection; team work: from problem-solving to debating the applicability of new information; and community building are all supported by a range of assigned-to-shared, enclosed-to-open, task-to-lounge-supported, specialized-to-multi-purpose, formal-to-informal spaces.

# Creating Workplaces that Keep Working

Your workplace strategy is more than just a real estate strategy.

Thoughtfully designed workplaces will support an organization's strategic goals and culture, as well as the highest performance of their workers, all while using assets wisely and enabling future adaptability and flexibility.

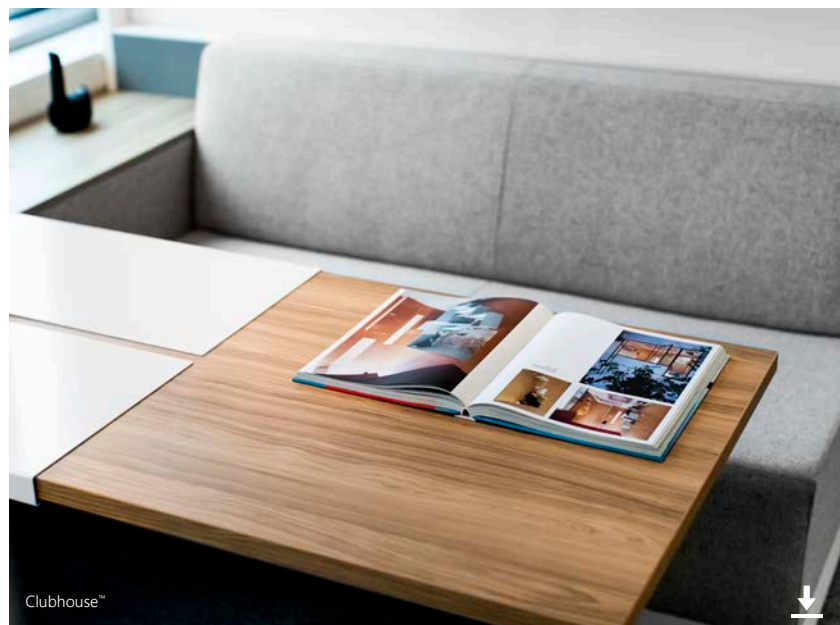
Consider these four aspects of a robust, relevant workplace strategy to empower your unique organization, and from there, define the solo, team, and community spaces required to support the organization, people, and work processes.





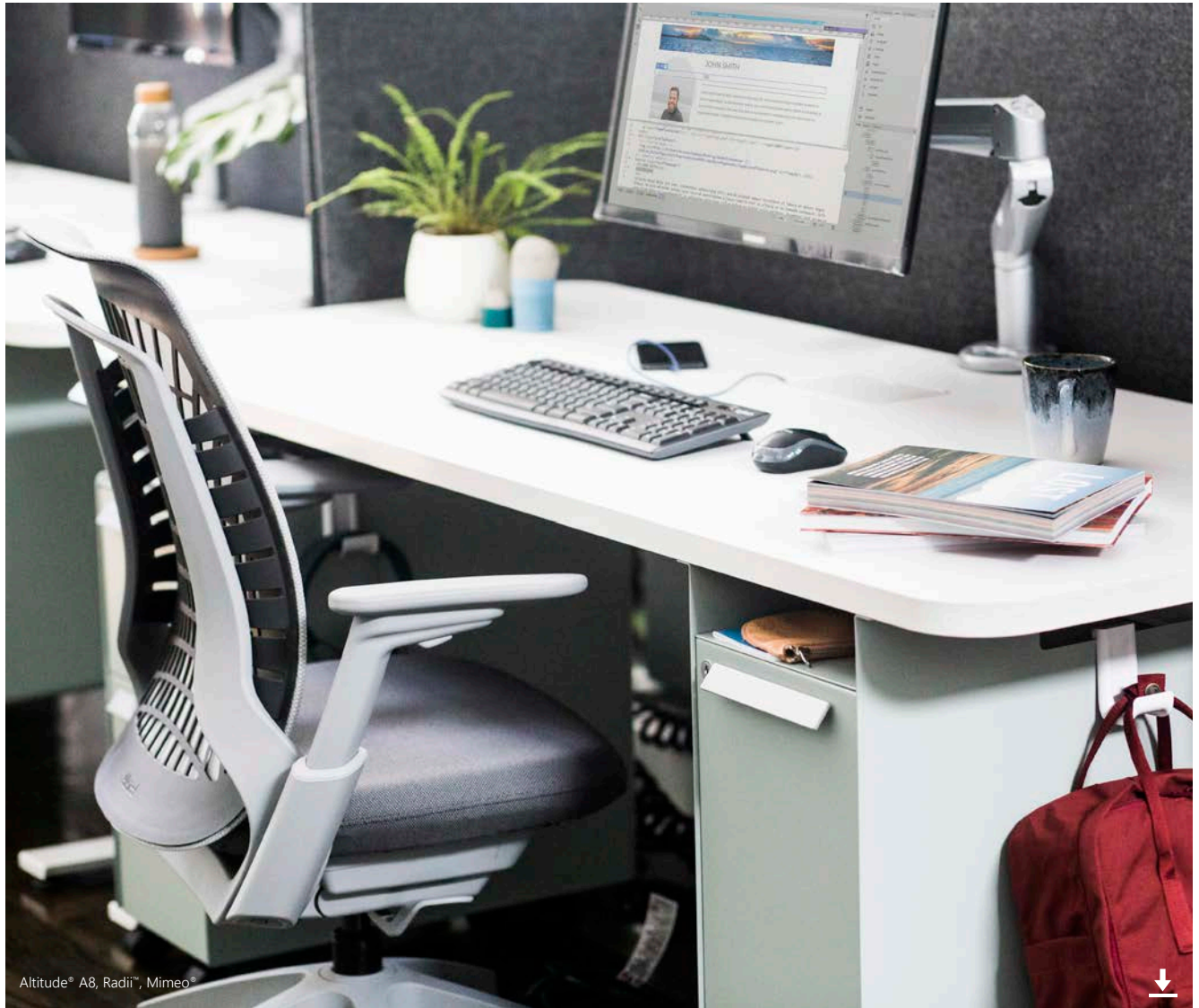


*We believe in the power of solving problems  
with people, not just **for** them.*



*Offices and workstations are getting smaller, and space is being increasingly allocated to team and community spaces to better reflect where work is happening.*

## SOLO SPACE



Space utilization (getting the most out of every square foot) has become an important organizational focus. We offer an unlimited selection of systems, tables, seating, and storage to address all the ways people need to work in smaller footprints.

Whether you're making the most of your existing workplace or re-planning to better support new ways of working, we have the solution.





## Touchdown

With more workers working in a broader variety of spaces, alternative places to work comfortably for short periods of time are essential.



## Workstation

Your personal space to call home. Space division, surface, and storage options are purposefully integrated to create the right setting to support the work at hand.



## Office

As offices move off the perimeter so more people benefit from natural light, our architectural walls offer glass options to let the light in for office dwellers, too.



Align™



Altitude®



Radii™

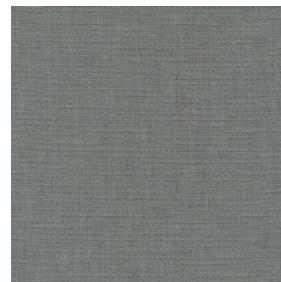
*Work from home, work from anywhere,  
or work anywhere within the office. Understanding what mobility  
means inside your organization is essential to successfully  
integrating it into your workplace strategy.*



**LAMINATE**  
Beigewood LWBE



**TEXTILE**  
Appoint Nimbus APN916



**TEXTILE**  
Appoint Platinum APN924

Textiles play a key role – neutral, textured palettes with gentle pops of color help strategically separate space that invites people to work alone or together.



Further™, Radii™, Evo™

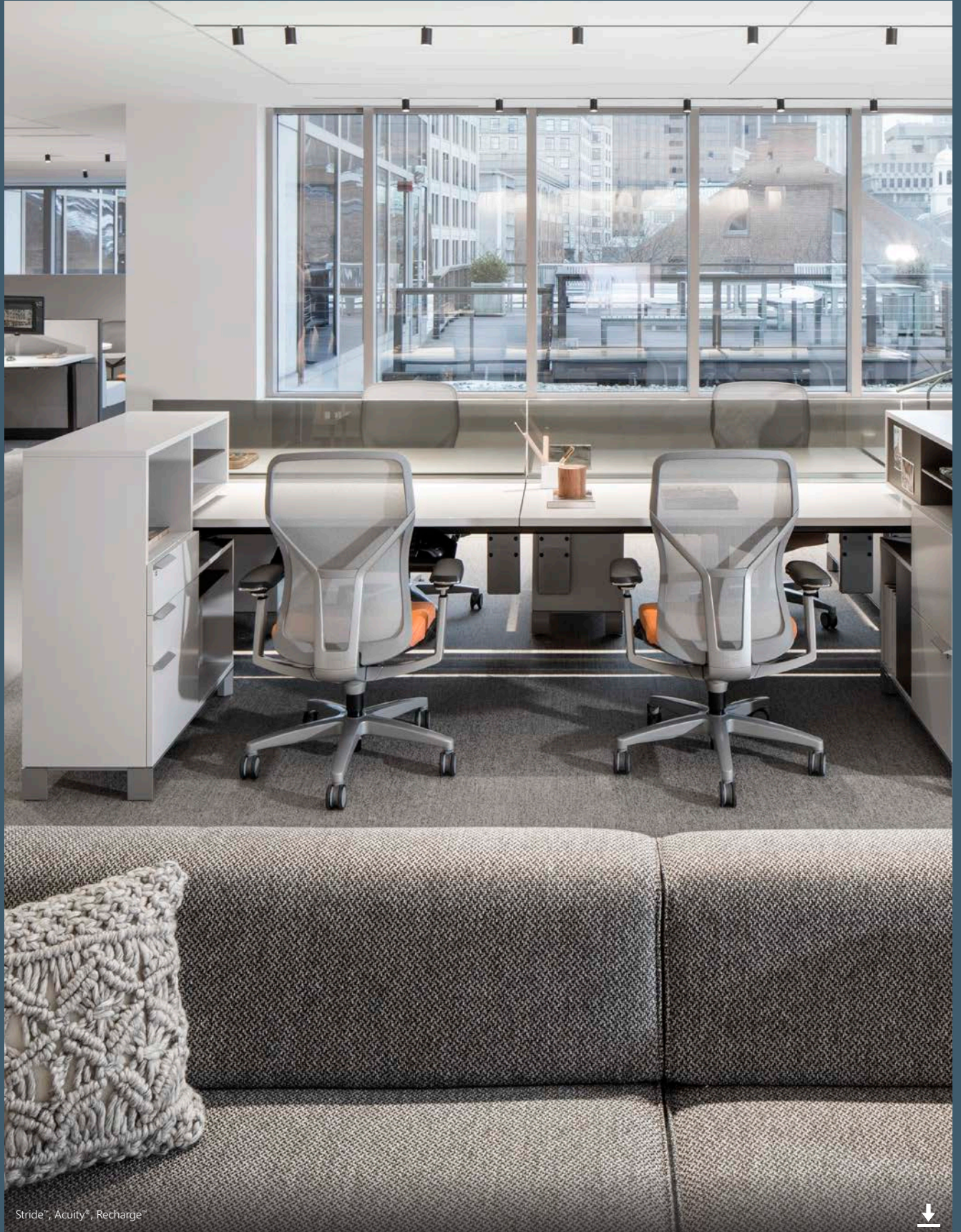
[allsteeloffice.com](http://allsteeloffice.com)





# SOLO SPACE

Touchdown



Stride™, Acuity®, Recharge™







## Thought-Starters



PINWHEEL LOUNGE



PLANTER DIVISION



ALONE/TOGETHER BENCH

# SOLO SPACE

Workstation



## Stride®

A system that works throughout the entire office to respond to changing needs, utilizing panels, desking, benching, and storage options.



## Further™

Easily accommodate a variety of workstyles, from highly mobile, interactive work to more desk-bound, focused work.



## Terrace®

A flexible space-planning solution for a variety of design applications and work environments.



## Optimize™

By bringing together panels, worksurfaces, and storage in one cohesive offering, we've made it easy to create efficient spaces.



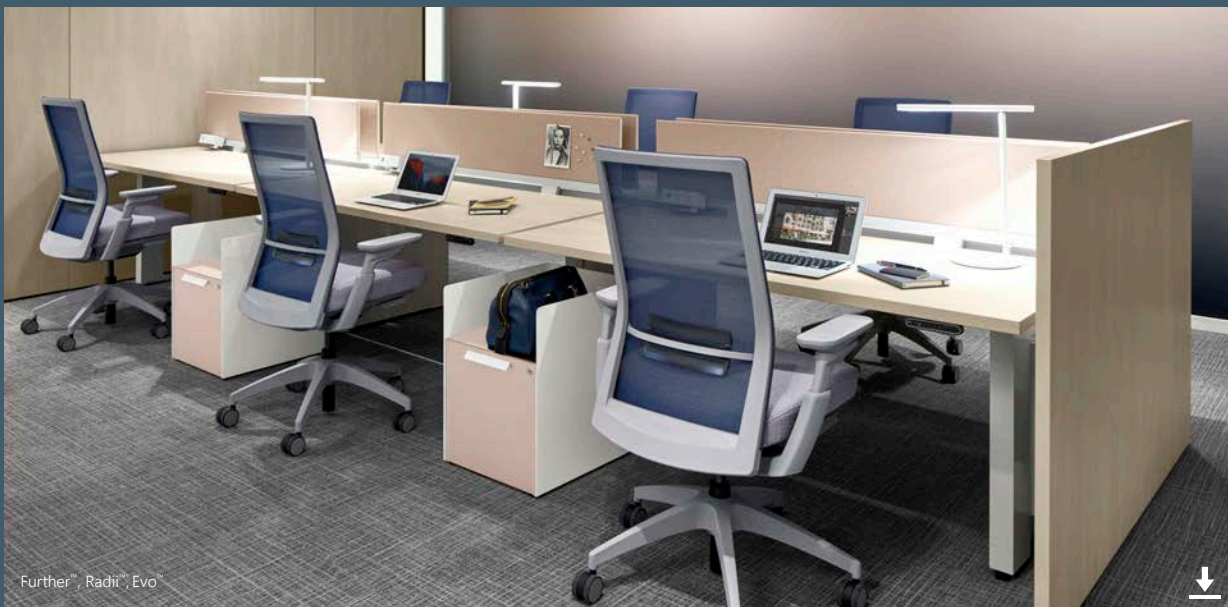


Altitude® A8, Lyric™



# SOLO SPACE

Workstation



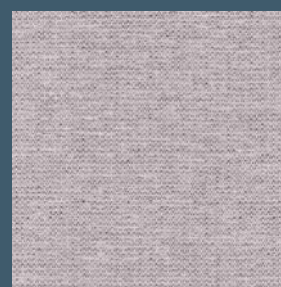
**LAMINATE**  
Phantom Ecru LPE1



**PAINT**  
Blossom P8K



**TEXTILE**  
Dapper Rose DAPR40



**TEXTILE**  
Hamilton Lilac HAML14





## Thought-Starters



OUTWARD-FACING STORAGE  
AND RAIL SPINE



OUTWARD-FACING PANEL SPINE  
WITH COLLABORATION



FORWARD-FACING PANEL SPINE



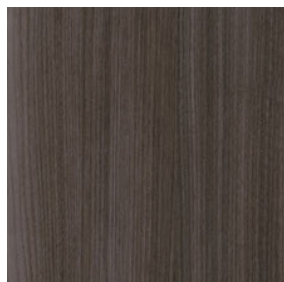
Approach™ offers a portfolio of modular laminate options that inspires you to rethink how the private office can be designed to address today's needs, change over time, and even serve more than one purpose.

#### **INTEGRATED HEIGHT-ADJUSTABILITY**

Sit-to-stand worksurfaces enable users to vary their posture throughout the day, promoting wellness in the workplace. Height-adjustable legs are concealed within a shroud or pedestal storage.

#### **COMPREHENSIVE STORAGE**

Credenzas, wall-mounted overheads, stack-ons, towers, and slim pedestals provide options for any storage need.



**LAMINATE**  
Skyline Walnut LSW1



**TEXTILE**  
Terrain Ridge TRRN20



**TEXTILE**  
Clyde Craftsman CLYD08



Approach®, #19®, Clarity®, Transfer®, Beyond®





# SOLO SPACE

Office







## Thought-Starters



**MULTI-FUNCTIONAL**



**WORK WALL**



**TRADITIONAL**

*Because work has become much more interdependent and collaborative, many new settings have been added to support a variety of group work activities, from intense to casual, tech-rich to conversation-rich, ad-hoc to planned, and quick to duration-of-the-project long.*



In addition to more traditional conference rooms, workspaces are including multi-purpose spaces designed to accommodate a variety of uses and groups of people. This includes spaces designed for group brainstorming or meetings, dedicated team project rooms, or impromptu huddle spaces strategically placed throughout the floorplan.

We offer inspiring solutions that make collaboration more comfortable and effective, and can help your organization interpret the Allsteel-sponsored Knowledge Worker Team Productivity research.



## Lounge

Nearby soft seating promotes comfortable conversations that might help build connections or encourage sharing of important insights and project challenges.



## Huddle

Collaboration can't always be planned. A variety of purposefully placed settings support quick, impromptu meetings.



## Project Room

Dedicated team spaces, like project rooms, not only house work-in-progress and enable effective information sharing, but also promote team identity.





Reflect®



Rock™



Retreat™

*To make these spaces more inviting and functional, a range of seating postures should be provided, along with technology and easy power access.*



**LAMINATE**  
Columbian Walnut LWZ



**TEXTILE**  
Dolce Camel DOL709



**TEXTILE**  
Remix by Kvadrat 133 SMHMRMX13



THE RATIO OF SOLO TO TEAM AND  
COMMUNITY SPACES IS NOW TYPICALLY

50/50





# TEAM SPACE

Lounge







## Thought-Starters



**MEDIUM TEAM WITH TECHNOLOGY**



**SMALL SPACE-DEFINING**



**MULTIPLE TEAMS, SAME SPACE**





Aware® Marker Board



Clubhouse™



Community Table

*Workers are at their desk an average of 35-45% of the time. This suggests that work is no longer happening primarily at the workstation.*

## TECHNOLOGY SUPPORT SOLUTIONS



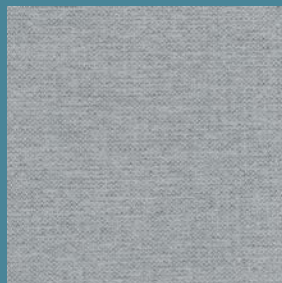
The Harvest™ Classic table is available with optional center cable-routing channel and integrated power capability.



The freestanding Further™ hub provides data and power throughout the floorplan. Choose from hardwired or corded and a range of colors.



**LAMINATE**  
Kingswood Walnut LK11



**TEXTILE**  
Hamilton Cloud HAML18



**TEXTILE**  
Blazer Silcoates SCAMBLZ30



**TEXTILE**  
Divina 756 by Maharam  
SMHMDIV75



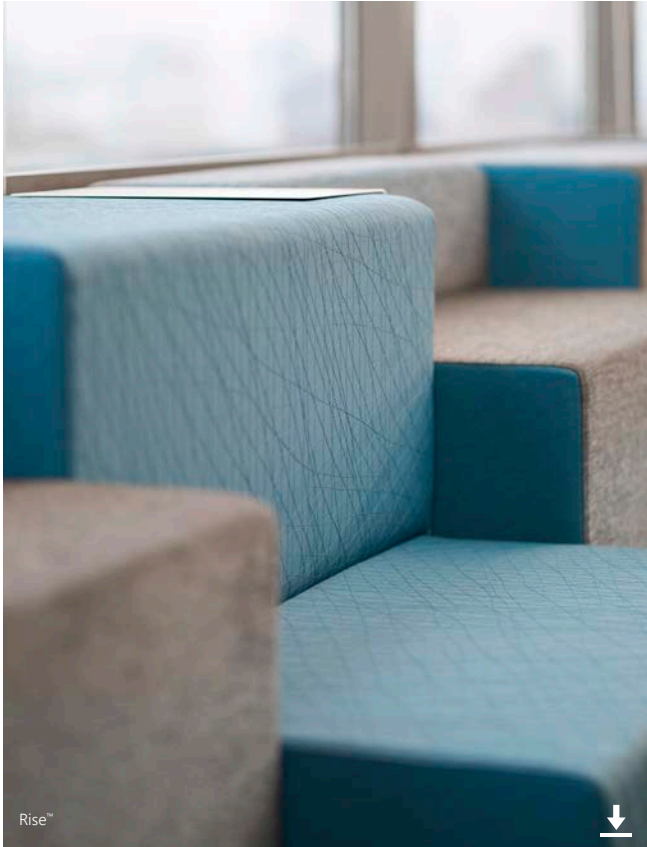
# TEAM SPACE

Huddle



Picnic™, Summit™, Cloud™





## Thought-Starters



FIDGET SPACE



SEMI-ENCLOSED GROUP THINK



SOCIAL COLLABORATIVE  
WITH TECHNOLOGY



Lyric™



Park™ Hi | Lo Table



Park™ Easel

*As workforce demographics shift, organizations are challenged to provide interactive and engaging environments that all employees will want to use.*



Designed in collaboration with Norm Architects, Park™ combines Danish craftsmanship and Allsteel heritage in a collaboration of soft seating, tables, and accessories that supports active work in open, social, and collaborative environments.



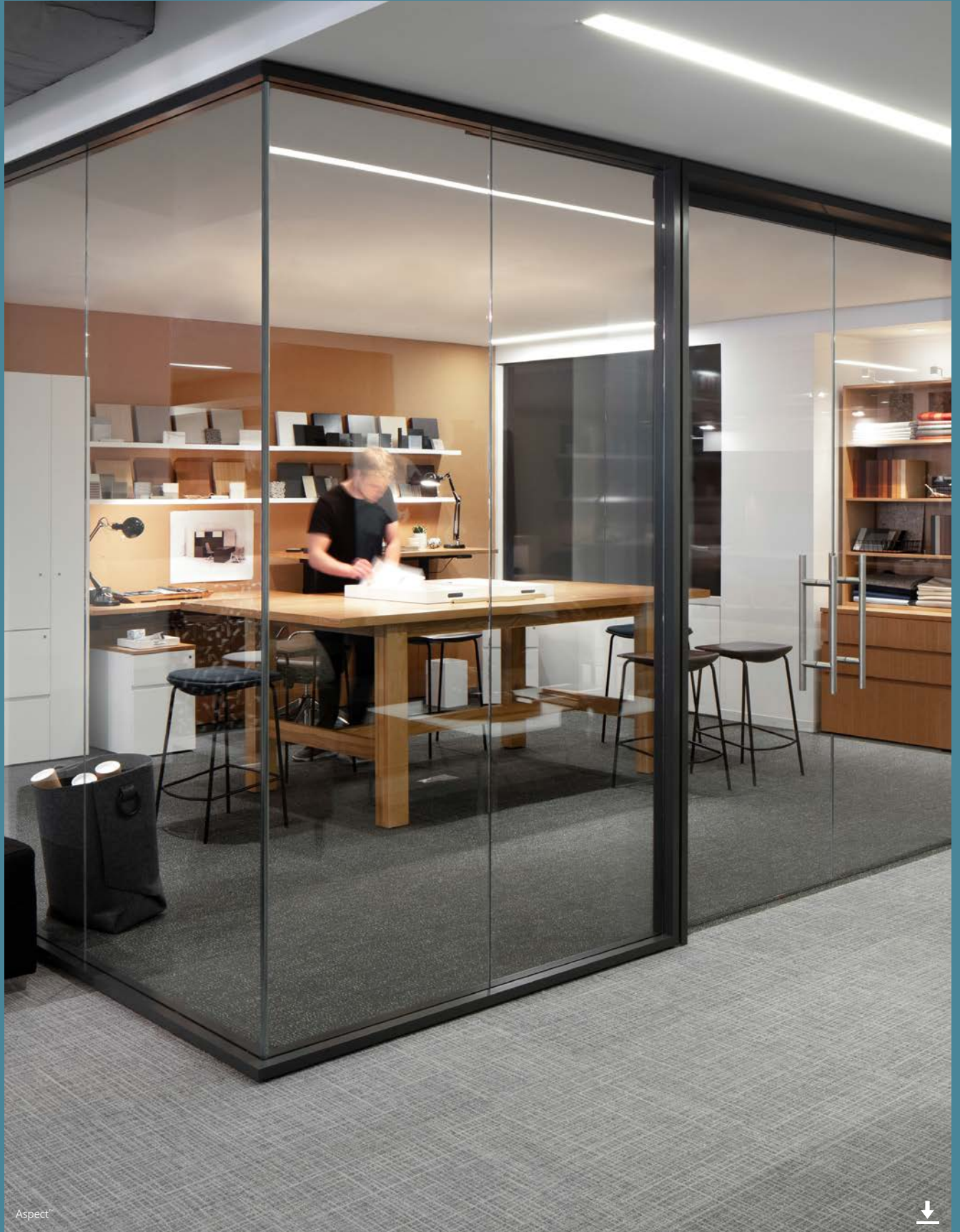


Community Table, Clarity®, Aspect™

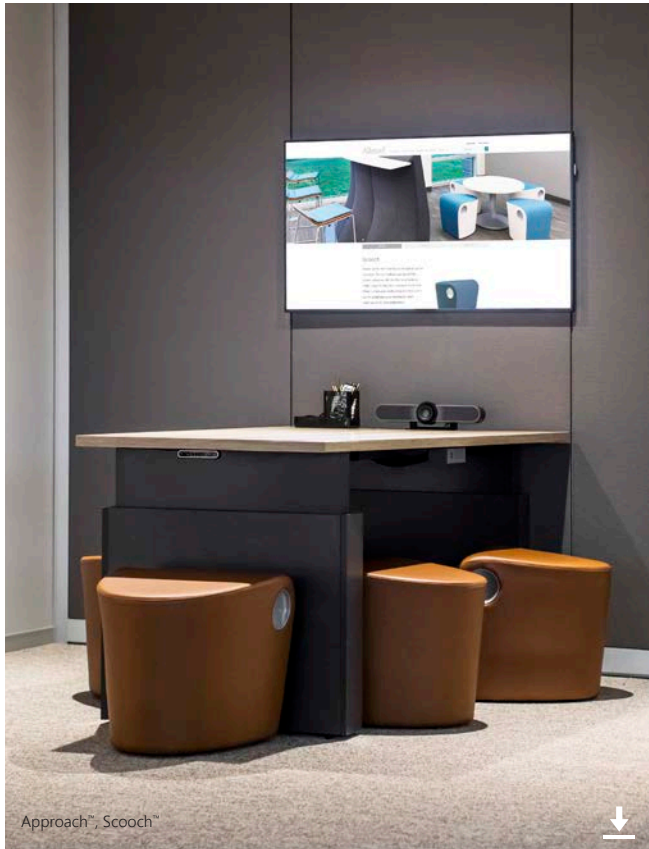


# TEAM SPACE

Project Room







## Thought-Starters



HEIGHT-ADJUSTABLE



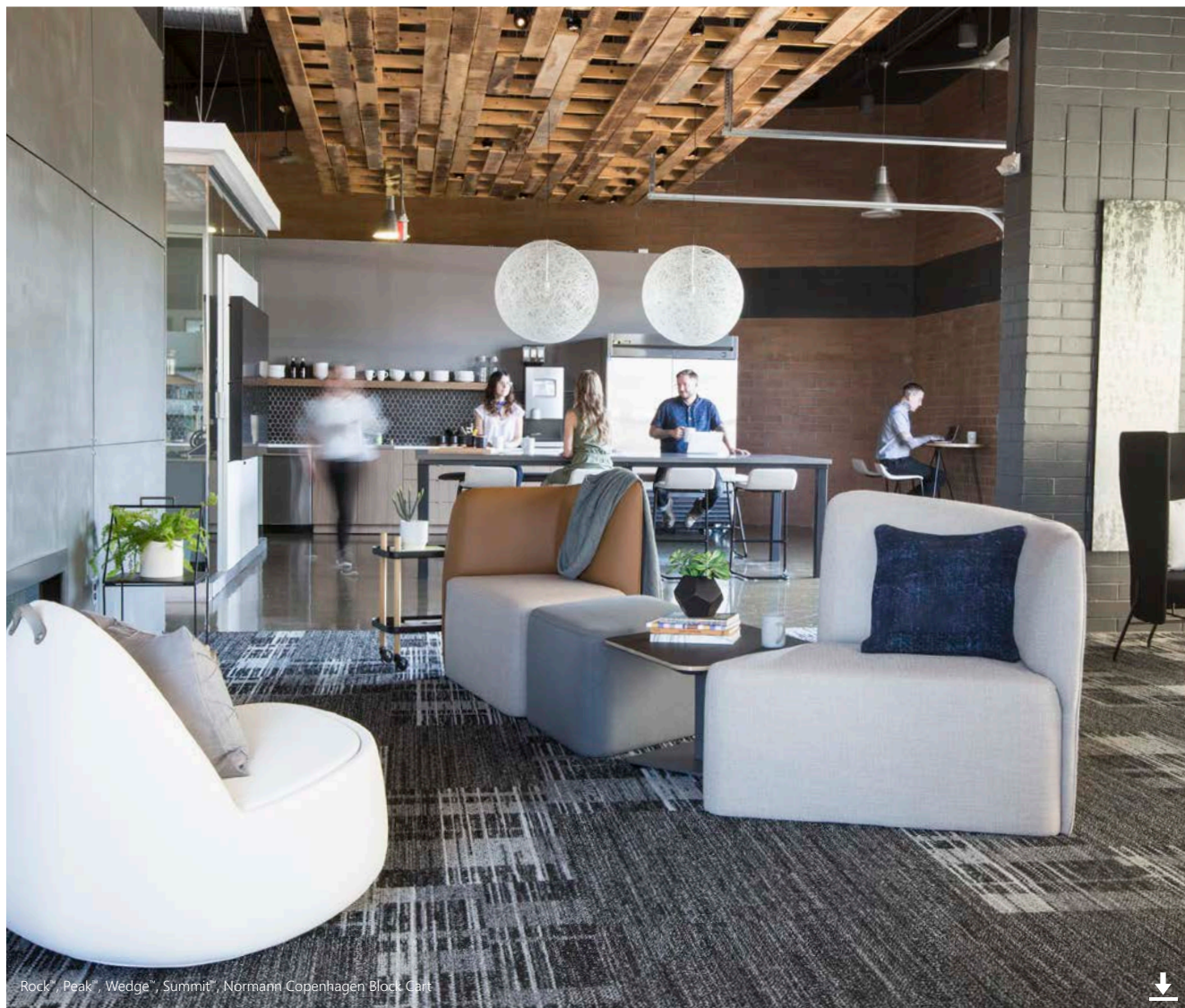
HI | LO MEETING SPACE



LAYERED/LEAN-IN



*Cafés are becoming destination areas that double as all-day meeting spaces.*



A space that's the hub of activity has to do a lot of things. Furniture plays an important and integral role, allowing people to come together to share ideas and be productive in many different ways. It can be at a traditional table with chairs, within

a more enclosed micro-environment, or more casually with lounge seating that enables multiple user postures. Allsteel products offer effective solutions for all the ways workers might share a meal and ideas.



## Welcome

From sophisticated and formal, to fun and colorful, create a look that announces your company culture without saying a word.



## Café

A mix of different tables and seating – not to mention the proximity of food and drink – makes the café a great place to meet or socialize throughout the day.



## Conferencing

Whether a large meeting is client-facing or internal only, technology, acoustical separation, and other enabling attributes make these spaces important and useful.



Parallel™ Club Plus Lounge



Vicinity™ Lounge



Parallel™ Coffee Table

*Many spaces dedicated to collaborative work are unused because they are in the wrong place or don't support the type of work being done. Three general types of group activities – creation, problem-solving, and knowledge-transfer – can require somewhat different types of collaborative space.*



**LAMINATE**  
Florence Walnut LFW1

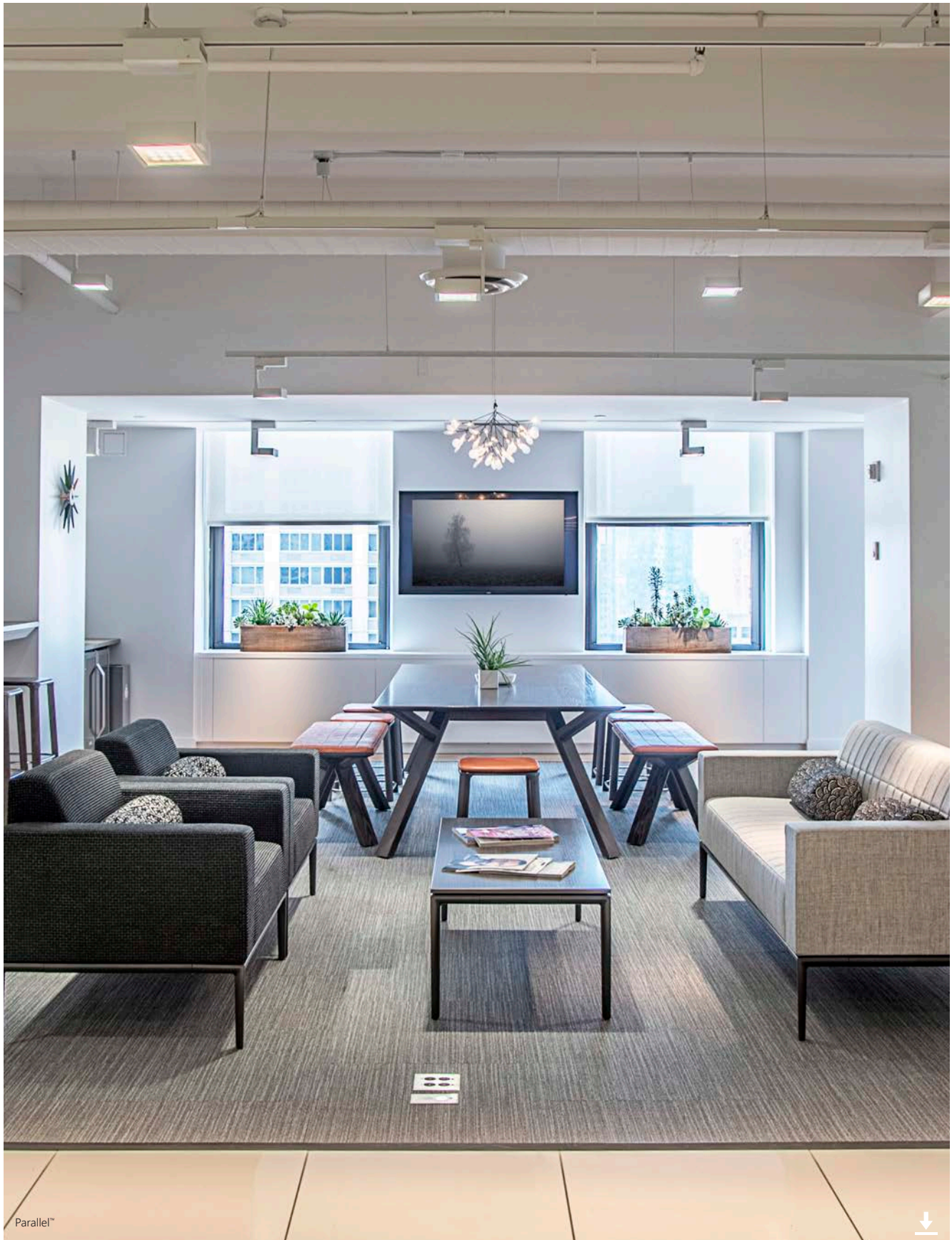


**TEXTILE**  
Florence Leather Struzzo FLOR09



**TEXTILE**  
HBF Abito Garda ABI80





Parallel™

# COMMUNITY SPACE

Welcome



Normann Copenhagen







## Thought-Starters



**SOCIAL GATHERING**



**LIVING ROOM**



**HOTEL LOBBY**





Harvest™



Vicinity™

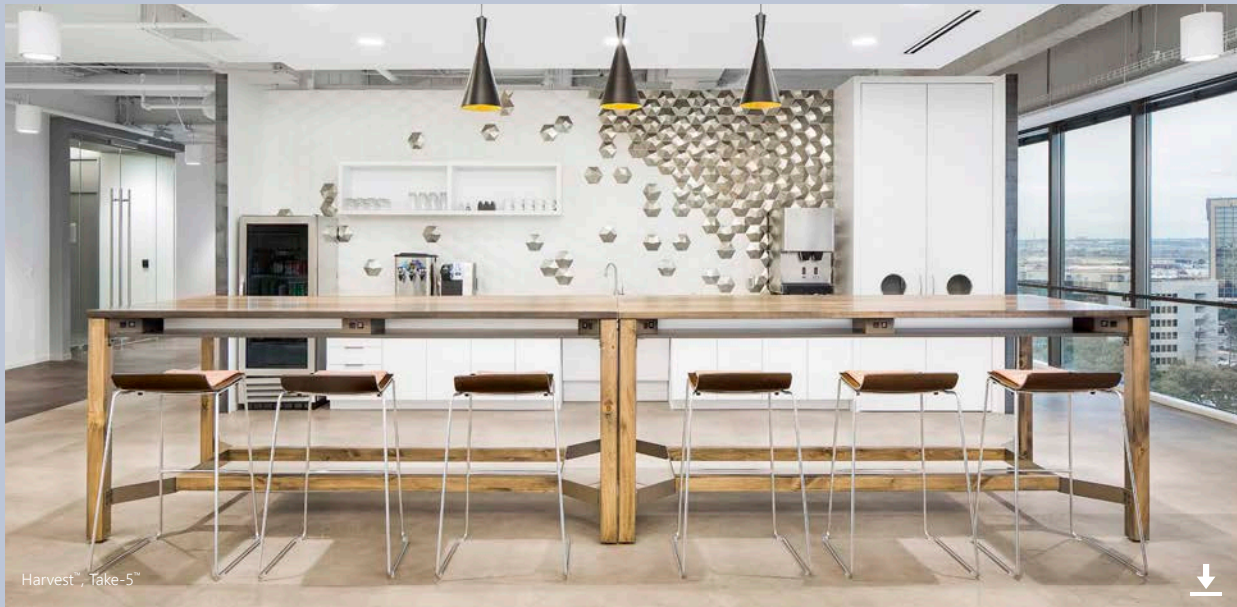


Picnic™

*Projects often move faster toward more successful completion when people share knowledge and experience, get instant feedback, build trust and camaraderie, and profit from diverse ideas and points of view.*



Designed in collaboration with Rainlight Design Studio, Townhall™ groups movable soft seating, tables, and accessories into multifunctional and agile micro-environments for individual and group work in shared, open spaces.



**LAMINATE**  
Fawn Cypress LFC1



**TEXTILE**  
Clyde Heirloom CLYD05



**TEXTILE**  
Purl Alpaca PURL08



**TEXTILE**  
Stinson Tangram Parchment  
SCFSTAN80

# COMMUNITY SPACE

Café



Summit™, Park™ Planter







## Thought-Starters



MEETING BOOTH



VARIETY OF SETTINGS



ADAPTIVE



Evo™



Community Table



Park™ Side Chair

*Conference rooms are often designed for more structured meetings with teams and clients, so they may be somewhat fixed in their design and use.*

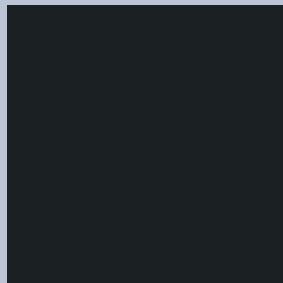
THE AVERAGE  
MEETING INCLUDES

3

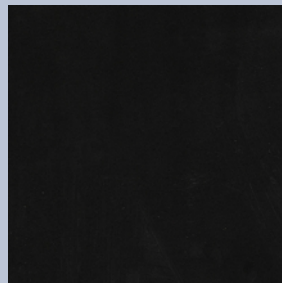
PEOPLE



**LAMINATE**  
NeoWalnut LNU1



**LAMINATE**  
Black Velvet LBV1



**PAINT**  
Solar Black PBX



**TEXTILE**  
Camira Main Line Flax Temple  
SCAMMLF16



# COMMUNITY SPACE

conferencing



Community Table, Retreat™, Park™ Planter, Aspect™





## Thought-Starters



**SMALL MEETING  
WITH TECHNOLOGY**



**MEDIUM COLLABORATION**



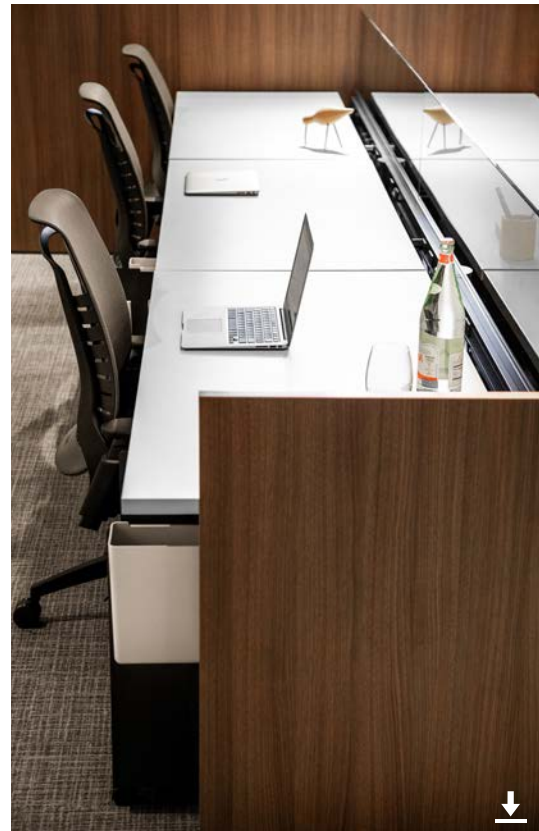
**LARGE PRESENTATION ROOM**





**This Page:** (Clockwise) Further™, Mimeo®; Stride®, Lyric™, Normann Copenhagen Block Cart; Vicinity™; Retreat™ **Opposite Page:** (Clockwise) Further™, Radii™, Mimeo®; Park™ Seating, Tables, and Planter





A photograph of a modern office lounge area, overlaid with a dark blue tint. In the foreground, a blue tufted sofa with a brown cushion is visible. To the left, a small round table holds a horse sculpture. The background shows a glass-walled office space.

# PRODUCT INDEX





**SEATING**  
**WORKSPACES**  
**TABLES**  
**STORAGE**  
**ACCESSORIES**



## TASK SEATING



#19®



Acuity®



Relate®



Mimeo®



Evo™



Svelte™



Lyric™



Access™



Quip™



Trooper®



Clarity®

## GUEST SEATING



Clarity®



Acuity®



Relate®



Evo™/Lyric™



Tolleson

## LOUNGE SEATING



Clubhouse™



Parallel™



Vicinity™



Reflect®



Clarity®



Retreat™



Mind-Share®



Rise™



Involve®



Linger™



Normann Copenhagen  
Form Chair



Scooch™



Wedge™



Rock™



Peak™



Park™ Settee



Park™ Solo



Recharge™

## STOOLS



Relate®



Mimeo®



Evo™



Lyric™



Access™



Quip™



Trooper®



Inspire®



Relate®



Lyric™



Inspire®



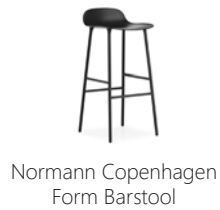
Vicinity™



Vicinity™



Take-5™



Normann Copenhagen  
Form Barstool



Summit™



Picnic™ Bench



Picnic™ Stool

## MULTI-PURPOSE SEATING



Clarity®



Inspire®



Seek®



Relate®



Lyric™



Vicinity™



Take-5™



Normann Copenhagen  
Form Rocking Armchair



Nimble®



Inspire®



ColHo™

Go to [allsteeloffice.com/configurator](https://allsteeloffice.com/configurator) to customize these products for your space.

## PANELS

---



Stride®



Terrace®



Concensus®



Optimize™

## DESKING

---



Approach™



Stride®



Involve®



Further™



## PRIVATE OFFICE

---



Approach™



Stride®



Involve®



Cadence®

## BENCHING

---



Stride®



Further™

## HEIGHT-ADJUSTABLE

---



Altitude®



Stride®



Further™

## CONFERENCE

---



Harvest™ Classic



Harvest™ Rustic



Harvest™ Metal



Aware®



Community



Park™ Hi | Lo Meeting



Park™ Meeting



Park™ Round Meeting



Park™ Soft Square Meeting



Cube  
Coming Summer 2019



Cylinder  
Coming Summer 2019



Panel  
Coming Summer 2019

## TRAINING

---



Aware®



T-Leg

## HEIGHT-ADJUSTABLE

---



Altitude® A3



Altitude® A5



Altitude® A8

## COLLABORATIVE



Harvest™



Aware®



Picnic™



Park™ Round Meeting



Park™ Soft Square Meeting



Park™ Work Pill



Park™ Hi Pill



Recharge™



Community



Round Pedestal  
Coming Summer 2019



Square Pedestal  
Coming Summer 2019



Cylinder  
Coming Summer 2019



Adaptive



X-Base

## OCCASIONAL



Parallel™ Coffee



Parallel™ Side



Normann Copenhagen  
Tablo



Park™ Lo Side



Park™ Hi | Lo Casual



Park™ Lo Pill



Belong® Coffee



Belong® Side



Transfer™



Recharge™



X-Base



## PEDESTALS

---



## LATERALS

---



## CREDENZAS

---



## TOWERS

---



## LOCKERS

---



Align™

## BOOKCASES

---



Essentials™

## LIGHTING

---



Link™



Wand™



Undercabinet

## ERGONOMIC TOOLS

---



Monitor Arms



Keyboard Supports



Altitude® Tables

## MEETING SUPPORT

---



Sketch™



Hedge™



Cloud™



Aware®



View™

## RECYCLING CENTER

---



Aware®

## ORGANIZATION TOOLS

---



Extensions™



*Follow. Like. Share.*





Allsteel Inc.  
Muscatine, Iowa 52761

[allsteeloffice.com](http://allsteeloffice.com)

Form # A8592.A1 (01/19)

©2019 Allsteel Inc.  
All registered trademarks and trademarks are the property of Allsteel. Indoor Advantage is a trademark of SCS Global Services. level is a registered trademark of BIFMA International.

